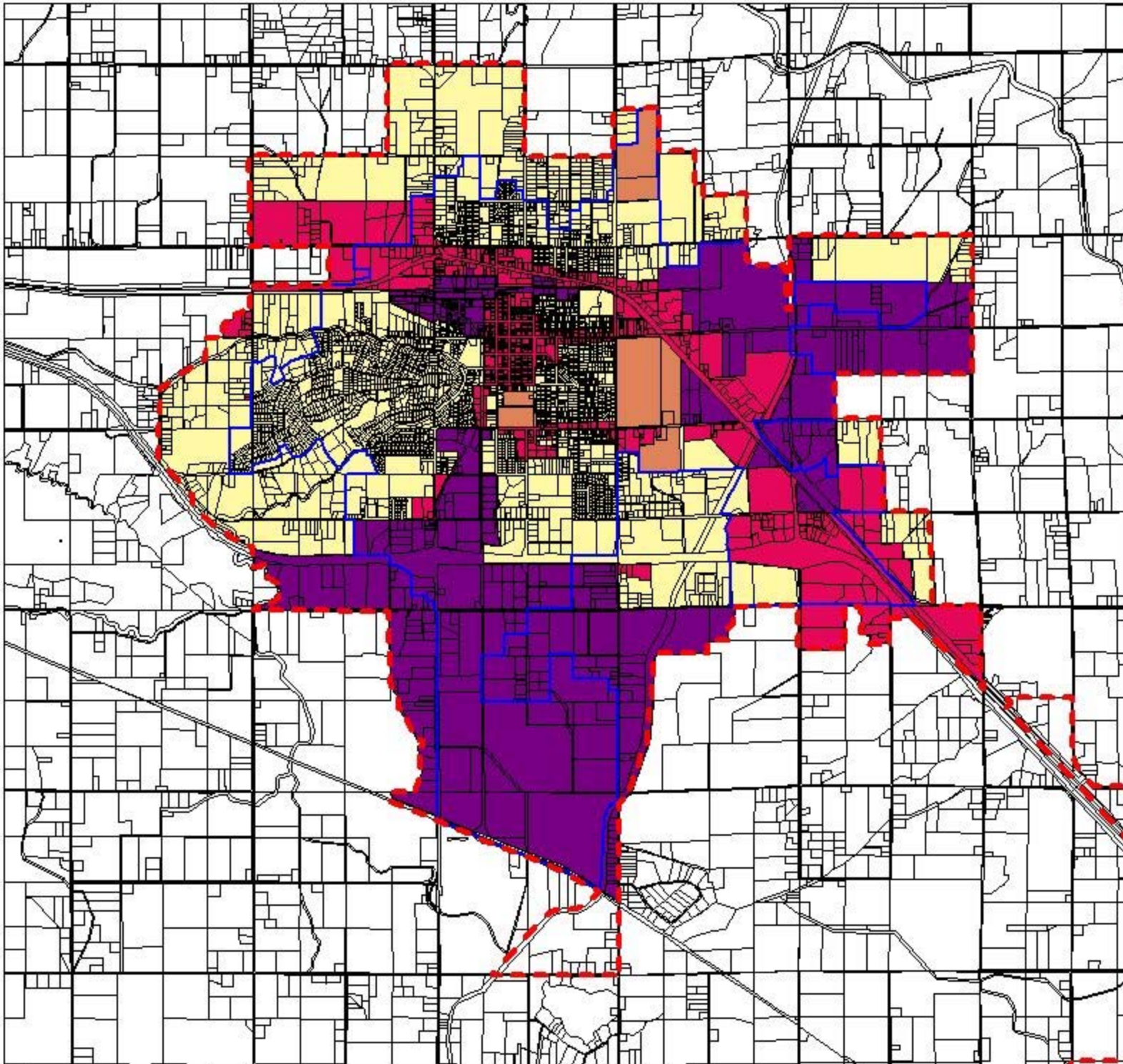
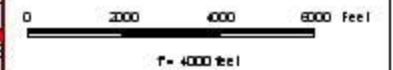


Comprehensive Plan



-  Urban Growth Bndry
-  Cities
-  Tax Lots
-  Public facilities
-  Commercial
-  Residential
-  Industrial
-  All Roads

Parcel Lot lines are for visual display only. Do not use for legal purposes.



Copyright (C) 2005 Yakima County
This map was derived from several databases. The County cannot accept responsibility for any errors. Therefore, there are no warranties for this product.